

RTXud.exe - User guide

What is RTXud ?

RTXud is a simple windows program that allow you to inspect and modify all values stored inside the configuration file “user_com.dat” for Magneti Marelli navigation system model RT4 and RT5. The most of these parameters are unknown by me and don’t have a description, only a little set have a description text. If you wish you can help me to complete the job.

RTXud have the ability to prepare an usb mass storage device to retrieve the configuration file from RT4/RT5. To use on RT4 device it must have usb cable already installed, as you can see in wiki page: rt4.wikidot.com

Installation

RTXud has no installation procedure, just save the executable in a folder of your PC and run it.

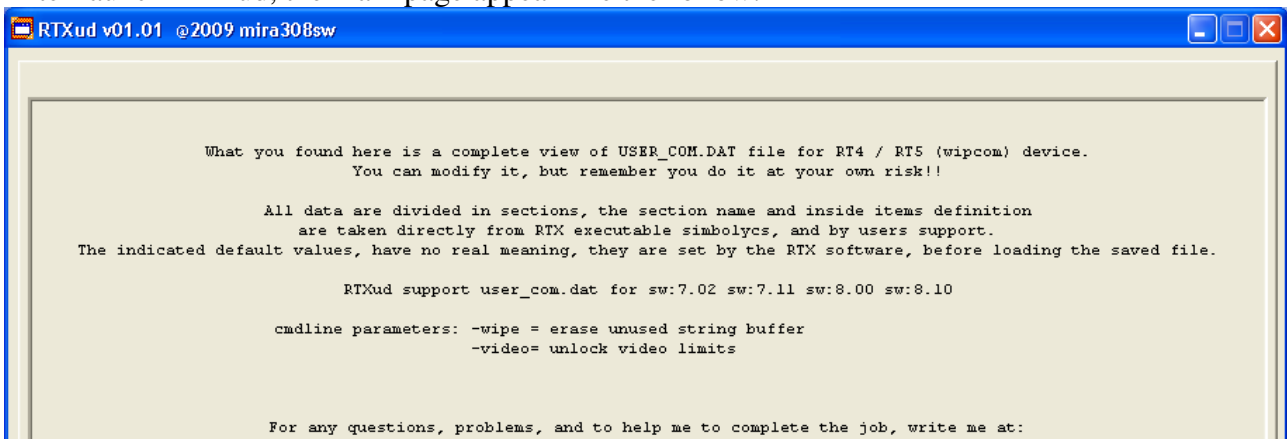
Command line parameters

There are 2 possible command line parameter:

1. -wipe: on Save command RTXud will clear the unused space for text buffer. It is useful to completely delete your personal information from the “user_com.dat” file.
2. -video: unlock video speed limit value in “General” section. Speed limit value is fixed to 5 km/h by default.

Use

After launch RTXud, the main page appear like the follow:



Three buttons are active:

- **Init USB:** Open a dialog window to select the USB device to use to read or write user_com.dat file from RT4/RT5. RTXud will prepare the selected device to read/write operation on RT4/RT5.
- **Load:** After you have read "user_com.dat" file from RT4/RT5, click on Load button to view the content with RTXud.
- **Exit:** close RTXud. Current opened file will not be saved.

After load a file, you can see on the left of the Save button the recognized file version, and the upper side of the window is populated by a variable number of tab control.

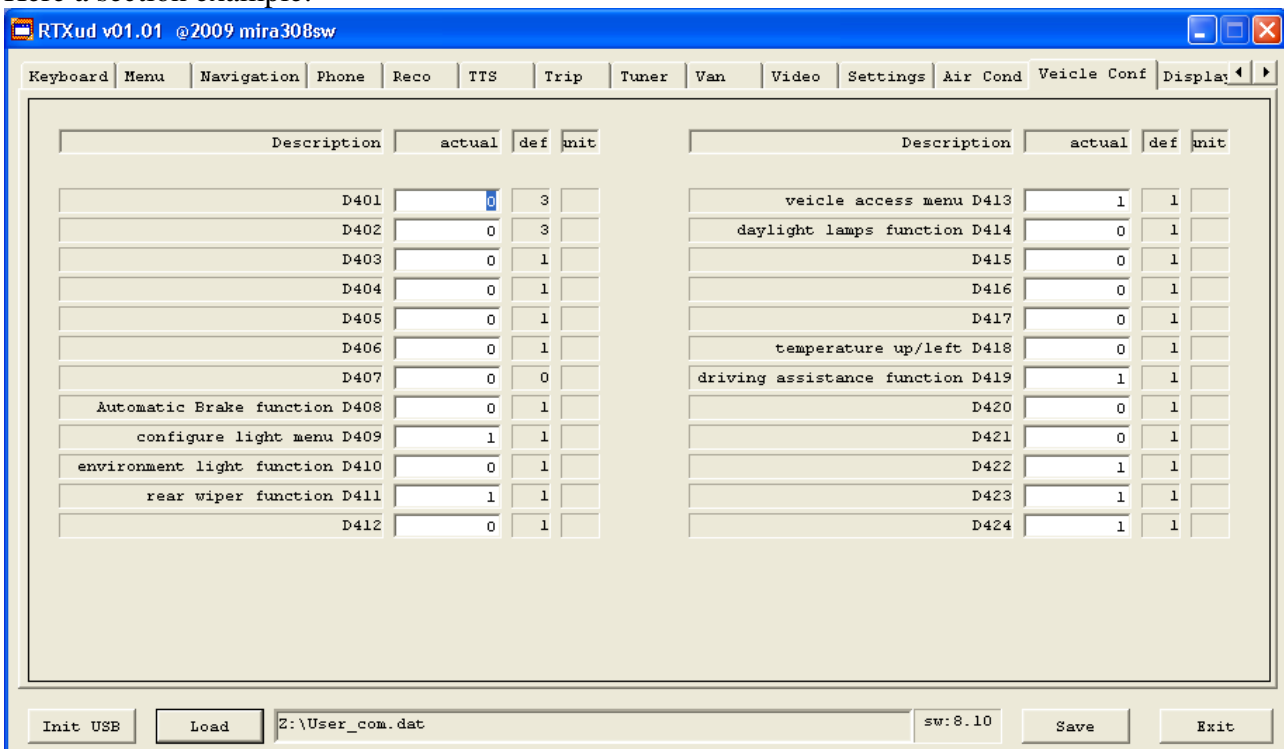
The total number of tabs depends on the loaded file version. Newer software versions have more sections on the right end of the tab list.

Each tab has the name of the logical section.

To display a section, just click on the tab, to scroll the tab list use the two horizontal arrows on the right side.

Items in each section are labeled with their numeric ID preceding by a letter. Letters define the parameter data type as follows: B=byte W=word D=double word S=structure.

Here is a section example:



Save and Exit

When finished, click on Save to write changes on disk. RTXud asks for confirmation to proceed before executing.

Data will be written to the same loaded file; there is no way to write in a different file, so you must back up the original file by yourself.

Copy script

With InitUSB command RTXud write on the selected removable disk 2 files, used to transfer the configuration file with usb port on RT4/RT5 navigation system.

When insert the usb device on RT4/RT5, the system recognize it like a Navigation Upgrade CD, and execute the script found.

Now you are prompted with simple question to which you can only answer YES or NO.

If it is the first time you insert the usb device, and it contain only the 2 file created by RTXud, the only question to you is “Read user_com.dat ?”, the YES answer will copy configuration file to usb device.

The next time you insert the usb device, the presence of a configuration file on it, will produce a new question “Write user_com.dat ?”, the YES answer will copy configuration file back to RT4/RT5 device, the NO answer will return to the read question.

Suggestions

A few step to learn to use the program:

1. run RTXud program
2. put an usb mass storage device in PC socket
3. click on InitUSB
4. select the drive letter for USB device, click OK.
5. remove usb device, and insert in RT4/RT5 usb socket
6. answer YES to “Read user_com.dat ?”
7. after “Copy completed” message, remove the usb device.
8. on your PC save the 2 read files to a backup folder.
9. run RTXud and Load the file directly from usb device.
10. modify as you like, and Save.
11. remove usb device, and insert in RT4/RT5 usb socket
12. answer YES to “Write user_com.dat ?”
13. after “Copy completed. Reboot ?” message, remove the usb device and select YES.

Notes

Since I am the last arrived in the RTX world, i must specify that my work is based on what has been done by others people before me, to which I want to thank:

dmatos for the info given to me in private, and those present in his wiki page
<http://rt4.wikidot.com>

Janfi67 for the info given to me in private and for all programs and documents he made public on
<http://www.planete-citroen.com>

all users of the forums that I attend, that shared with the others information in their possession

<http://www.passionepeugeot.it>

<http://www.citroen-c-club.com>

<http://www.c4atreros.es>

<http://www.eurovan2.com>